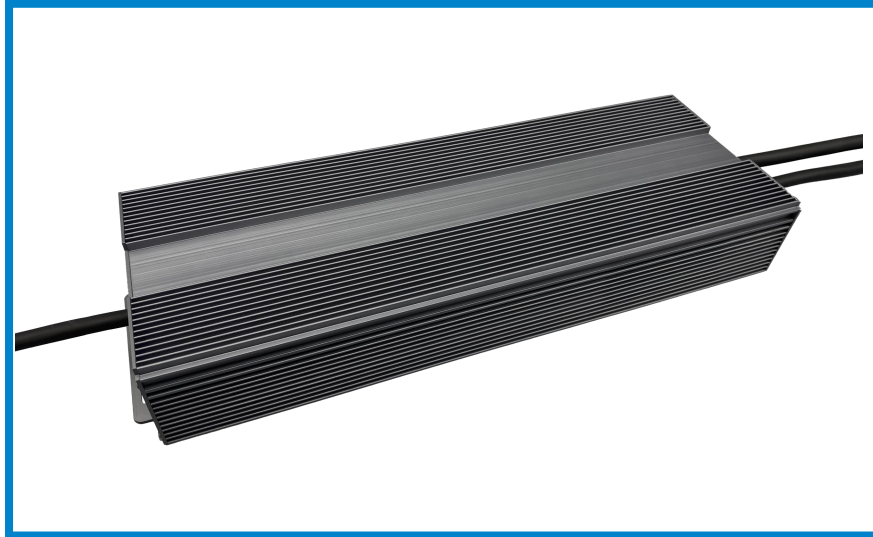


PSCF-1000W-24V



Features

Output:	Constant Voltage
Range:	120-277VAC
PFC design:	Two-stage PFC function
Efficiency:	Up to 95.5%
Protections:	over load /over power
Heat dissipation:	Cooling by free air convection
Waterproof performance:	Full aluminum protection housing,for dry,damp & wet locations(US) IP66 can be used indoor and outdoor(EU)
Design features:	This is a high efficiency, high power factor LED drive power supply
Application:	Suitable for LED lighting and moving sign applications
Warranty:	2 years warranty
Others:	High power factor $PF \geq 0.95$, flicker-free

Specification

Model		PSCF-1000W24V	PSCF-1000W48V	
Certificate		/		
Output	DC Voltage	24V	48V	
	Voltage Tolerance	±2%	±2%	
	Voltage Regulation	≤0.5%	≤0.5%	
	Rated current	41.67A	20.83A	
	Rated power	80%Load@120VAC	100%Load@230/277VAC	
	Load Regulation	±1%	±1%	
Input	Voltage Range	120-277VAC		
	Frequency Range	47 - 63Hz		
	Power Factor (Typ.) @ full load	>0.99@120VAC	>0.97@230/277VAC	
	THD(Typ.) @ full load	≤5%@120VAC	≤10%@230/277VAC	
	Efficiency(Typ.) @ full load	≥93%@120VAC	≥95.5%@230VAC	≥95.5%@277VAC
	AC Current (Max.)	<8.2A@120VAC	<5.2A@230VAC	<4.15A@277VAC
	Inrush Current (Typ.)	39.1A,296us@50%Ipeak 120VAC	60.6A,1.05ms@50%Ipeak 230VAC	
		87.9A,1.63ms@50%Ipeak 277VAC		
	Leakage current	<0.5mA		
Over Load	≥110% Hiccup mode, recovers automatically after fault condition is removed			
Environment	Working TEMP.	-40~+50°C (see below derating curve)		
	Working Humidity	20 - 95%RH non-condensing		
	Storage TEM.,Humidity	-40 - +80°C,10 - 95% RH non-condensing		
	TEMP.coefficient	±0.03%/°C(0 - 50°C)		
	Vibration	10 ~ 500Hz, 5G 12 minutes/cycle, X Y Z axis 72 minutes each		
Safety & EMC	Safety standards	UL8750 , CAN/CSA-C22.2 No.250.13(US) BS/EN/IEC 61347-1, BS/EN/IEC 61347-2-13 , BS/EN/IEC 62384(EU)		
	Withstand voltage	I/P-O/P:1.88KVAC	I/P-FG:1.88KVAC	O/P-FG:0.5KVAC (US)
		I/P-O/P:3.75KVAC	I/P-FG:1.5KVAC	O/P-FG:0.5KVAC (EU)
	Isolation resistance	I/P-O/P: 100MΩ/ 500VDC/ 25°C/ 70% RH		
Surge Immunity Test	AC Power Line:Differential Mode 6KV,Common Mode 10KV			
Others	Net Weight	3.59KG		
	Dimension	332.6*114*53.3mm (L*W*H)		
	Packing	/		
Notes	<p>1. Unless otherwise specified, all specifications are measured at 120V input, rated load, and 25°C ambient temperature.</p> <p>2. Default states: Output voltage is DC Rate Voltage.</p> <p>3. LED driver Meets the harmonic emissions requirements of ANSI C82.77-10.</p>			

Non Dimming Driver-Constant Voltage

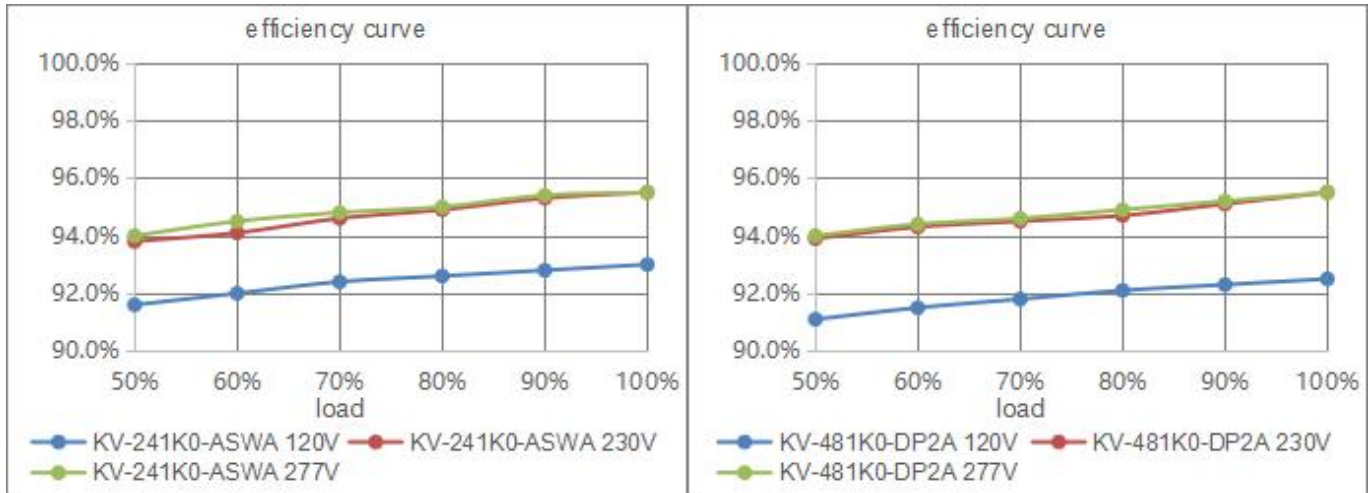
MCB recommendation

When the input voltage is 120Vac,the number of LED Driver matched by circuit breakers is as follows:		
MCB Type	Level	The number of LED Driver
C type	10A	0
	13A	0
	16A	1
	20A	1
	25A	1
When the input voltage is 230Vac,the number of LED Driver matched by circuit breakers is as follows:		
MCB Type	Level	The number of LED Driver
C type	10A	1
	13A	1
	16A	1
	20A	2
	25A	2
When the input voltage is 277Vac,the number of LED Driver matched by circuit breakers is as follows:		
MCB Type	Level	The number of LED Driver
C type	10A	1
	13A	1
	16A	2
	20A	2
	25A	3

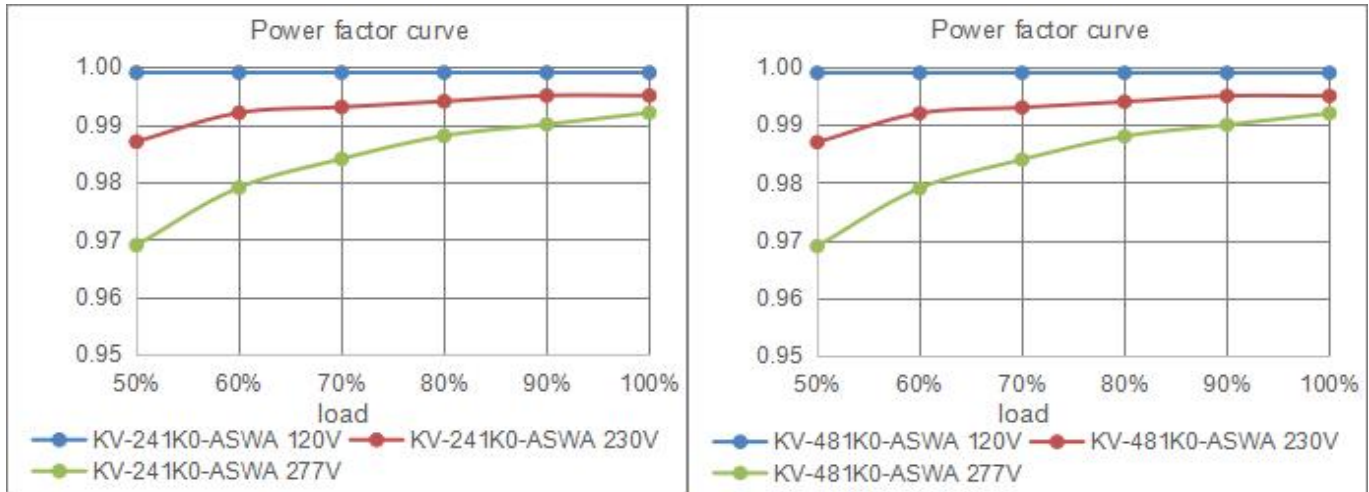
Note:

- 1.The above quantities of the led drivers connected on the Type C is recommended base on the maximum ambient temperature is 50 ° C
- 2.The breaker should be selected according to the input rated voltage, input rated current, ambient temperature, and trip characteristic curve.

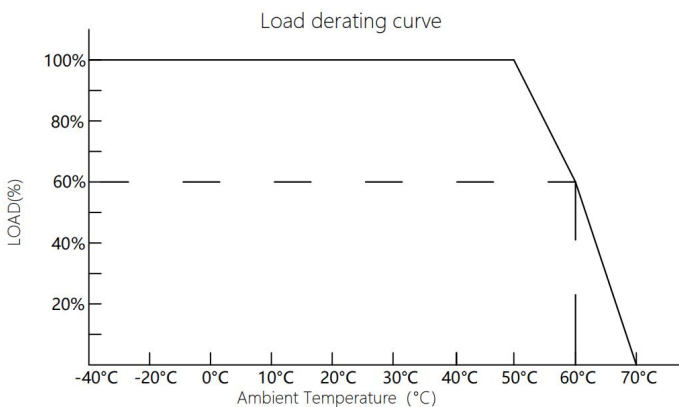
Efficiency Curve (efficiency vs output load)



Power factor curve(Power factor vs output load)

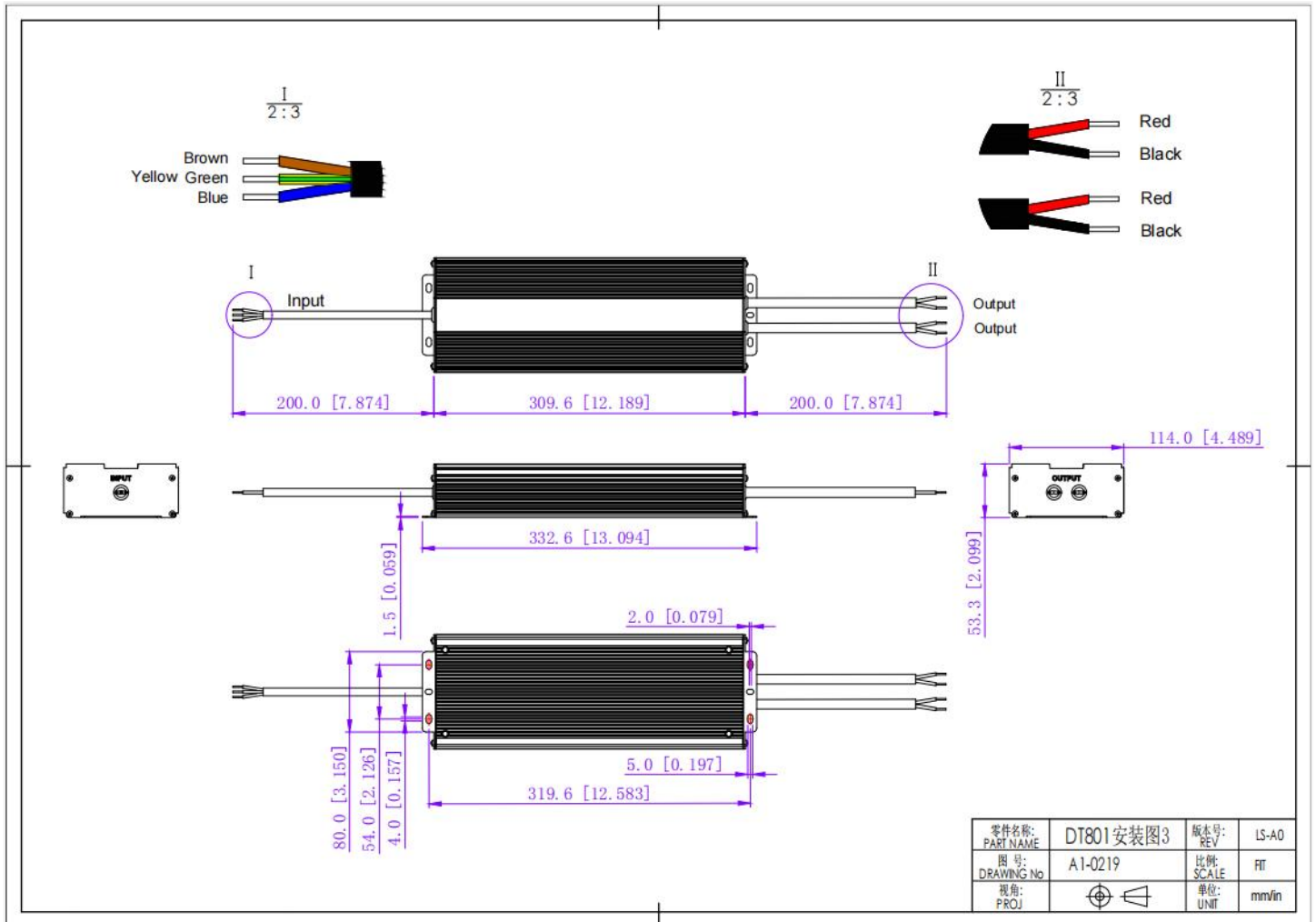


Derating Curve (output load vs TEMP.)



1. To extend their life, please refer to the Derating Curve and derate according to the temperature.
 2. The output current of the LED driver should be selected according to the rated current of the lamp and the ambient temperature.
- Normally, we recommend the power supply to reserve a certain amount of load to extend LED driver's life .

Mechanical Specification



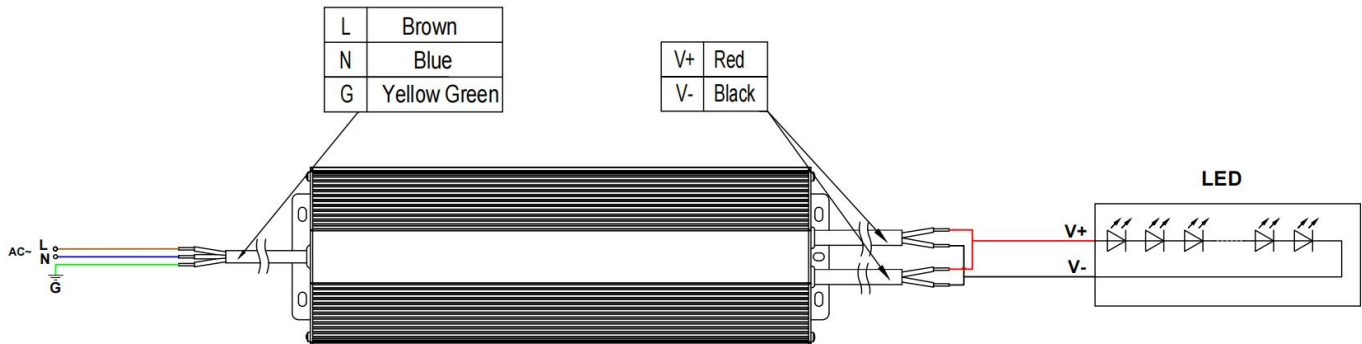
24V&48V Version

Universal wire gauge	
DT801	
Input wire(24V&48V)	Brown (L) Blue(N) Yellow-green(G)(3*17AWG/1.026mm ²)
Output wire(24V)	Red(V+) Black(V-):2*(2*12AWG/3.31mm ²)
Output wire(48V)	Red(V+) Black(V-):2*(2*14AWG/2*2.075mm ²)
Remarks:	

Warm tips:

Please make sure you connect these correctly otherwise your product will not function correctly and could be damaged.

Connecting Diagram



Instructions

1. This driver should be installed by qualified and professional person.
2. Please make sure the driver is installed with adequate ventilation around it to allow for heat dissipation.
3. Ensure that wiring is correct before test in order to avoid light and power supply damage.
4. If driver Cannot work normally, don't maintain privately.

Have any questions, please contact sjoly@axentled.com

Please visit our website or contact us for more information! www.axentled.com